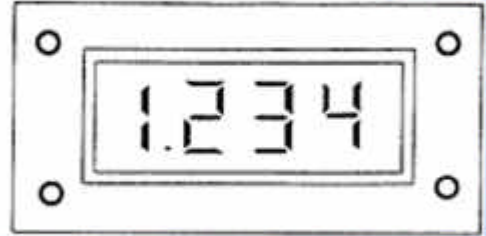


3½ Digit LCD Volt Meter Module WITH BACKLIGHT GM-035HLC

FEATURES:

- 3½ digit liquid crystal display.
- Single battery operated 9V supply or $\pm 5V$ DC supply
- 0.5 inch (12.7mm) digit height
- 200mV full scale input sensitivity (A and B version)
- Low power dissipation-Typically less than 200mW
- Guaranteed zero reading for 0 volts input on all scales
- High input impedance > 100M ohm
- Self-mountable with optional mounting bezel



OPERATION SPECIFICATION

ABSOLUTE MAXIMUM RATINGS

Operating Voltage.....15v
 Operating Temperature..... 0 to 50 (32 to 122)

TERMINAL DEFINITION

| TERMINAL | SYMBOL | DESCRIPTION |
|----------|-----------------|-----------------------|
| 1 | HOLD | HOLD Display |
| 2 | V+ | Positive power supply |
| 3 | IN HI | Input Voltage high |
| 4 | IN LO | Input Voltage low |
| 5 | V- | Negative power supply |
| 6 | DP ₃ | Decimal point select |
| 7 | DP ₂ | Decimal point select |
| 8 | DP ₁ | Decimal point select |
| 9 | N.C | No connect |
| 10 | N.C- | No connect |

ELECTRICAL CHARACTERISTICS TA=25 , RH below 80%

| CHARACTERISTICS | MIN | TYP | MAX | UNIT |
|-------------------------------|-----|-----------|-----|--------------|
| Power Supply Voltage | 7 | 9 | 12 | V |
| Power Supply Current | 12 | 15 | 20 | mA |
| Sampling Rate | | 2.5 | | Reading/Sec. |
| Accuracy | | 0.1%±1dgt | | %±digits |
| Input Leakage Current (VIN=0) | | 1 | 10 | PA |